

www.ViaSolEnergy.com
Phone: 480-968-0757
FAX: 602-535-3162
Info@ViaSolEnergy.com

1705 W. University Dr.
Suite 105
Tempe, AZ 85281

COMMERCIALLY AVAILABLE PARTS

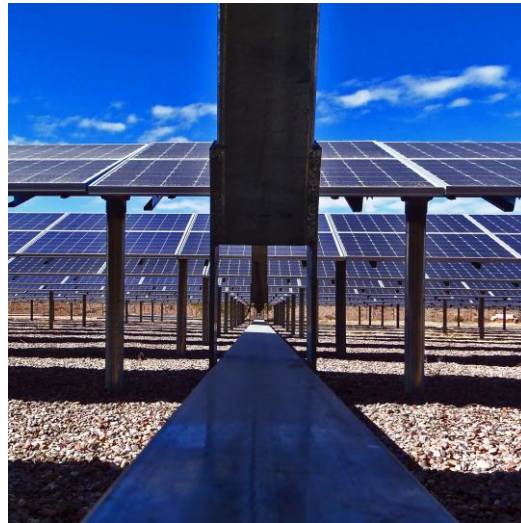
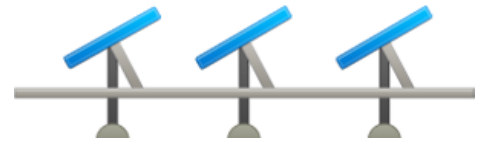
VIA SOL TRACKERS USE
NON-PROPRIETARY
COTS (COMMERCIAL
OFF-THE-SHELF)
COMPONENTS TO
PROVIDE ASSURED LOW
COST MAINTAINABILITY
AND SPARE PARTS
AVAILABILITY.

WARRANTY

ALL VIA SOL TRACKERS
ARE DESIGNED FOR
DURABILITY AND
MAINTAINABILITY.
VIA SOL'S OPERATIONAL
EXPERIENCE AND
EXTENSIVE USE OF
COTS COMPONENTS
ALLOWS US TO
PROVIDE A TRACKER
WARRANTY PACKAGE
THAT MEETS YOUR
PARTICULAR RISK
PROFILE.

ViaSol FM-G9™

FIELD MOUNT SINGLE AXIS TRACKER



OVERVIEW

The ViaSol FM-G9 Single-Axis Field Mount Tracker achieves cost efficiency through a robust, easy to install, low maintenance design.

ViaSol's FM-G9 is also one of the only Single-Axis Trackers that captures 15-30% more light than fixed tilted systems while maintaining the same installed cost!

The FM-G9 tracker captures up to 50% more light and power output than flat mounted systems!

SINGLE-AXIS TRACKERS

Single-Axis solar trackers follow the sun in azimuth, moving from east to west each day. Because they face the sun more directly, tracker mounted PV modules generate more annual electricity than fixed mount modules. The low install cost, low maintenance cost, and high reliability of ViaSol single-axis trackers allows our customers to realize the lowest Levelized Cost of Electricity (LCOE) and superior investment returns.

BENEFITS

- The modular design allows for flexible array layout and scaling
- Fewer footings than fixed arrays and other trackers
- Fewer motors and less control cabling than other trackers
- Reduced installation and maintenance costs
- Programmable controller (optional Web connections)
- Highly efficient drive system nearly eliminates parasitic power consumption

FEATURES & CAPABILITIES

- Scalable from 100 kW - 100 MW
- 1 Controller & 2 Actuators per MW
- PLC (Programmable Logic Controller) Control System
- Advanced tracking algorithm eliminates row-to-row shading
- Suitable for a complete range of sun, sky and climate conditions
- 15-30% more light capture and energy output than fixed tilt systems
- Off-the-shelf hydraulic ram based actuator mechanism
- Biologically safe hydraulic fluid

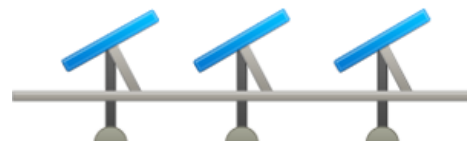


www.ViaSolEnergy.com
 Phone: 480-968-0757
 FAX: 602-535-3162
 Info@ViaSolEnergy.com

1705 W. University Dr.
 Suite 105
 Tempe, AZ 85281

ViaSol FM-G9™

FIELD MOUNT SINGLE AXIS TRACKER



DESIGN

ALL VIASOL TRACKERS ARE THE RESULT OF A DESIGN BASED ON ROBUST SIMPLICITY. STANDARD STEEL MILL SHAPES, COTS (COMMERCIAL OFF-THE-SHELF) COMPONENTS, AND SIMPLE, BOLTED CONNECTIONS MAKE VIASOL TRACKERS EXCEPTIONALLY COST EFFICIENT TO BUILD AND SERVICE WORLDWIDE.

TRACKER PACKAGES

VIASOL OFFERS TRACKER PACKAGES IN A WIDE RANGE OF SIZES AND CONFIGURATIONS. FOR MORE INFORMATION CALL OUR OFFICE AND ASK ABOUT VIASOL TRACKER PACKAGES.

TECHNICAL SPECIFICATIONS

The ViaSol FM-G9 Single-Axis Field Mount Tracker is designed with the utility owner and financier in mind.

The ViaSol FM-G9 can accommodate all production solar modules including thin film. The FM-G9 can also be installed in a wide range of climates, sites and soil conditions.

The ViaSol FM-G9 Package is optimized to your site, solar components and commercially available structural elements.



Description	Specification
Sub Array Rated Power	Up to 1200 kWp
Angle of Inclination – South	0 Degrees
Tilt Range East/West	Max +/- 45 degrees
Advanced Anti-Shading Algorithm	ViaSol M-Series
Operating Voltage	208 VAC
East – West Drive	48 in. Stroke Path
Power Consumption Per Year	200 kWh/year per MW
Parasitic Load	Less than 0.01%
Wind Load Capacity	Up to 110 mph
Drive Type	Hydraulic
Wind Stow	35 mph
Ground Coverage Ratio	0.3 to 0.6 (owner spec.)
PV Modules Supported	Any Commercially Avail.
Push Ratio (kW DC per Drive)	Up To 600kW
Maintenance	Annual

